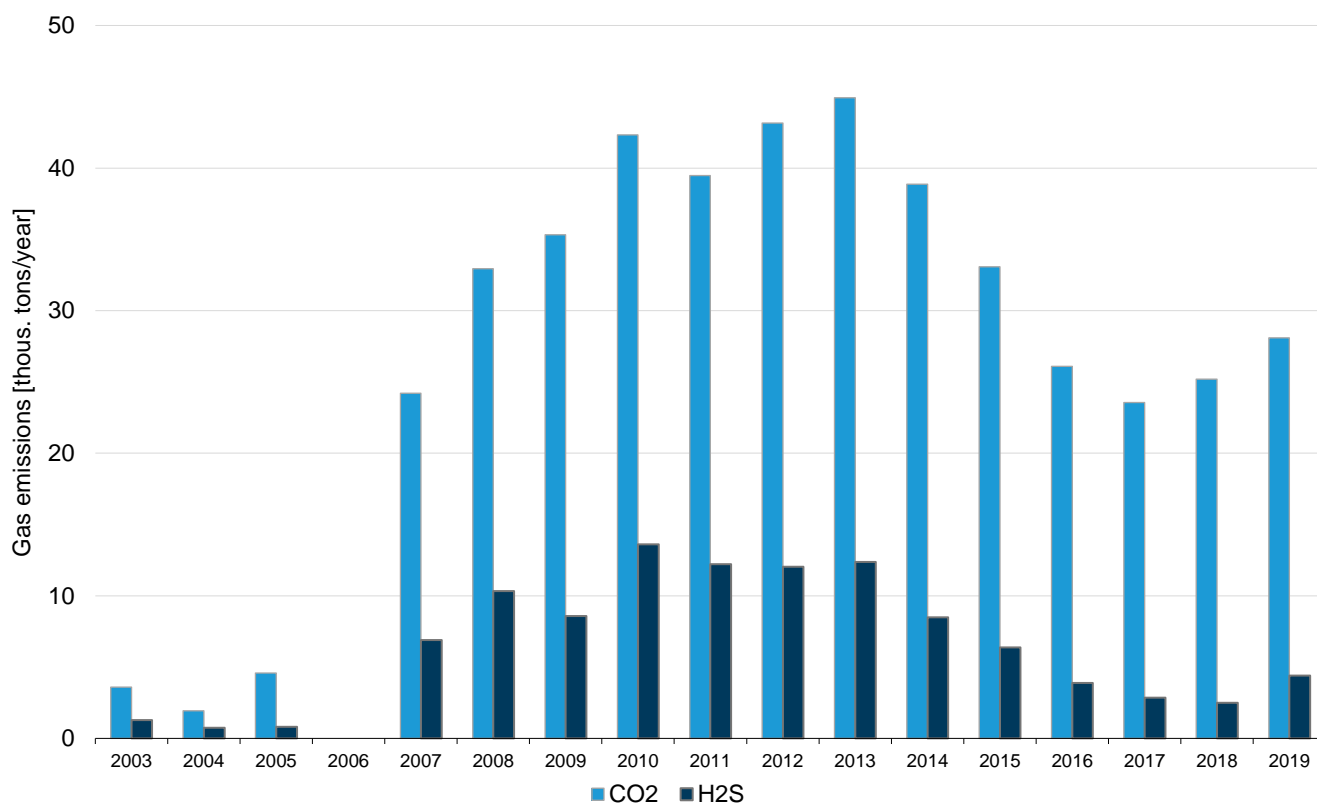


Emissions of carbon dioxide (CO₂) & hydrogen sulphide (H₂S) from Hellisheidi 2003-2019 & Nesjavellir 1995-2019

The margin of error is assumed to be around 5%.

Hellisheidi



Year	CO ₂ t/yr	H ₂ S t/yr	H ₂ t/yr	CH ₄ t/yr
2003	3,600	1,300	80	*
2004	1,900	700	40	*
2005	4,600	800	*	*
2006	0	0	*	*
2007	24,200	6,900	280	20
2008	32,900	10,300	410	30
2009	35,300	8,600	270	35
2010	42,300	13,600	390	45
2011	39,500	12,200	400	55
2012	43,200	12,000	420	50
2013	44,900	12,400	530	70
2014	38,900	8,500	460	80
2015	33,100	6,400	390	80
2016	26,100	3,900	340	50
2017	23,600	2,900	340	50
2018	25,200	2,500	300	50
2019	28,100	4,400	315	45

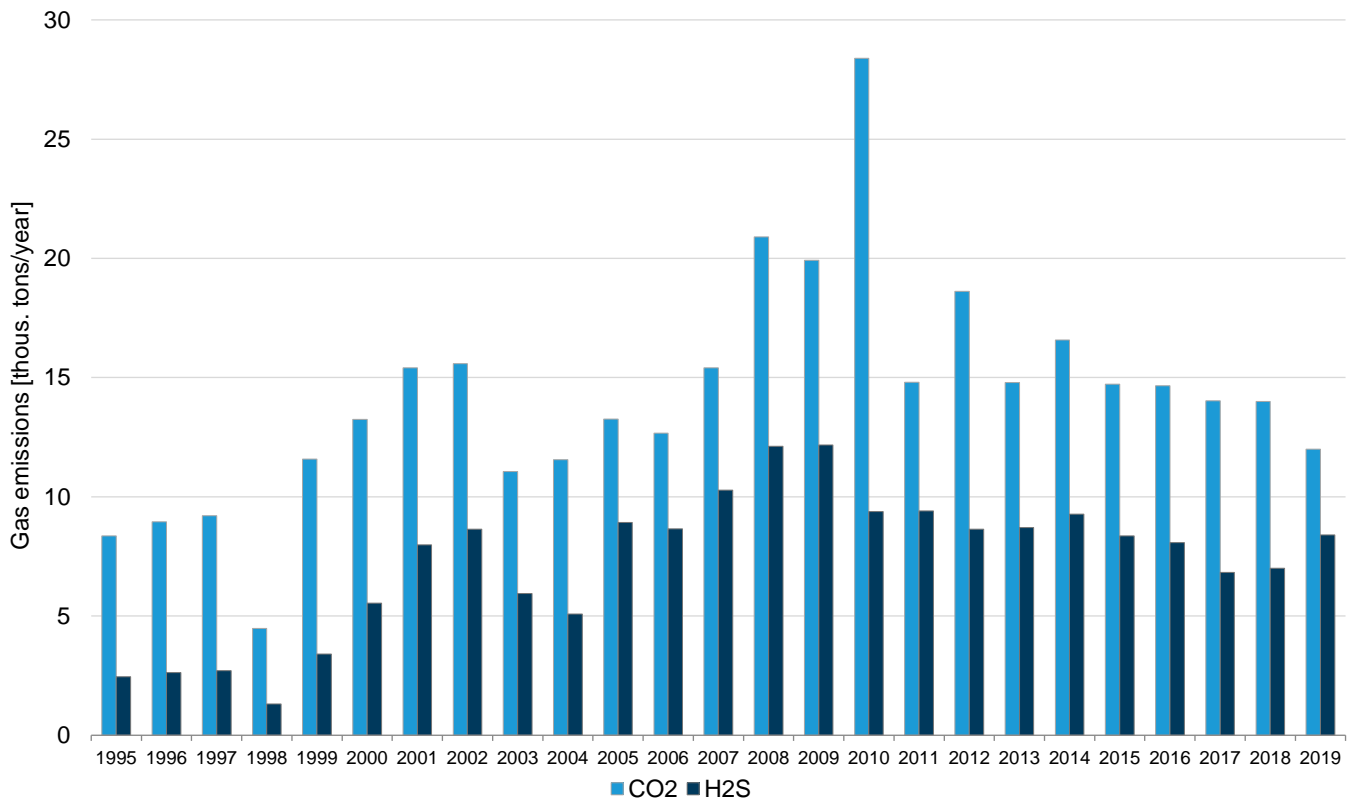
* Data not available for 2005 and 2006

Commentary 2019:

1) CO₂ and H₂S dissolved and reinjected in condensate water subtracted. First done in 2015

2) Approx. 9,700 tons of CO₂ and 5,000 tons of H₂S were reinjected in the SulFix and CarbFix projects.

Nesjavellir



Year	CO ₂ t/yr	H ₂ S t/yr	H ₂ t/yr	CH ₄ t/yr
2003	11,100	5,900	310	15
2004	11,600	5,100	320	20
2005	13,300	8,900	410	30
2006	12,700	8,700	*	*
2007	15,400	10,300	410	25
2008	20,900	12,100	660	25
2009	19,900	12,200	640	25
2010	28,400	9,400	480	110
2011	14,800	9,400	470	50
2012	18,600	8,600	460	30
2013	14,800	8,700	480	45
2014	16,600	9,300	490	55
2015	14,700	8,400	500	55
2016	14,700	8,000	470	45
2017	14,000	6,800	370	30
2018	14,000	7,000	370	30
2019	12,000	8,400	350	60

* Data not available for 2006