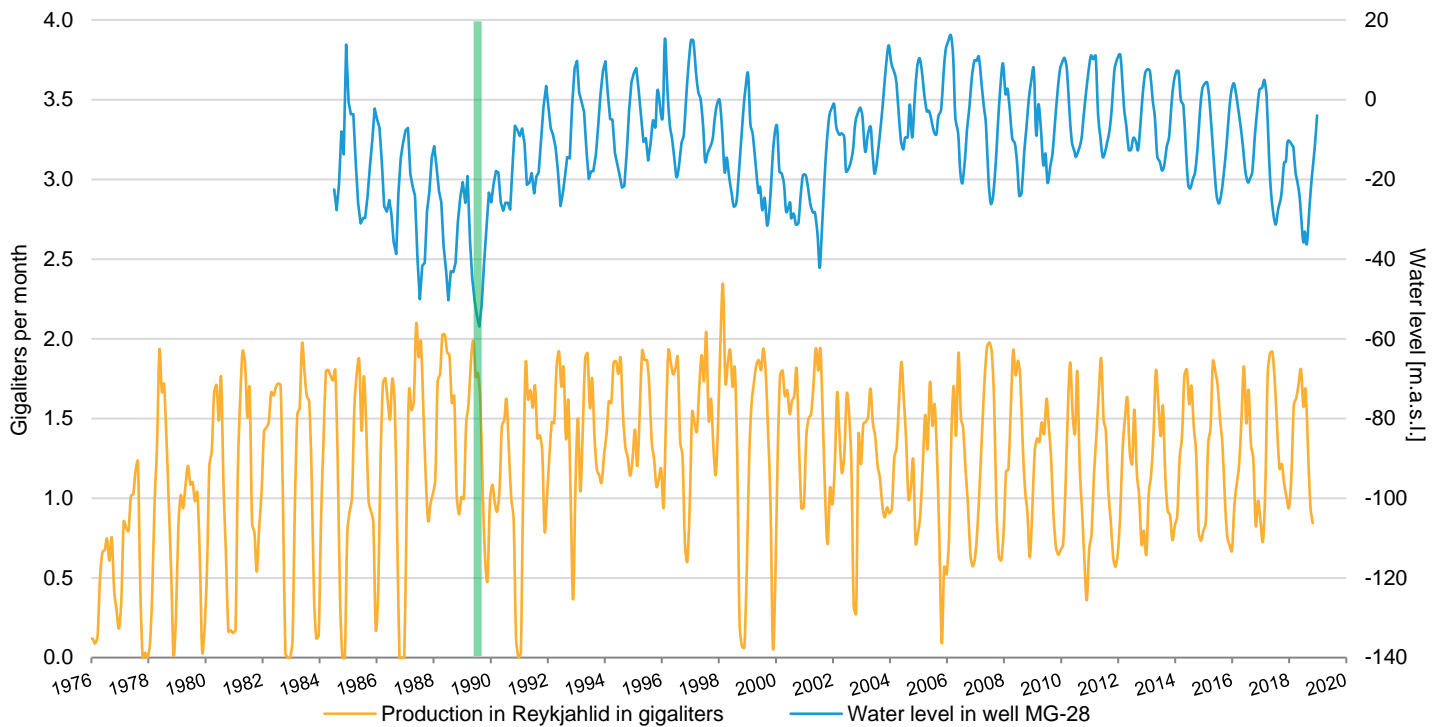


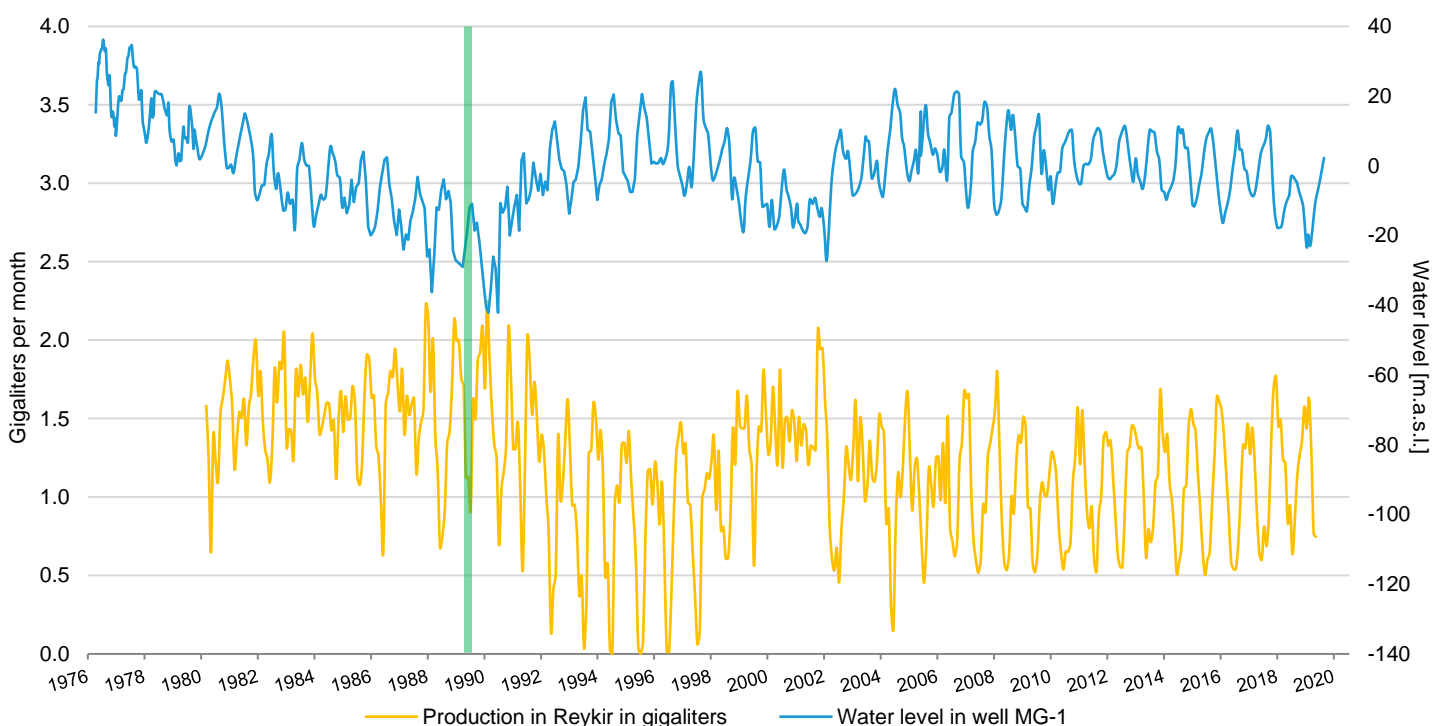
Water production and water levels in wells in the low-temperature fields of Veitur Utilities in the capital area

By measuring water levels and quantity of water produced it is monitored how production fields react to utilization. In the greater capital area, there are the production fields of Reykjahlid and Reykir in Mosfellsbaer and Ellidaardalur and Laugarnes in Reykjavik. The vertical green line marks when the thermal plant at the Nesjavellir geothermal power plant began operations. As a result, water production in low-temperature fields in the capital area was significantly reduced, which positively affected water levels in production fields.

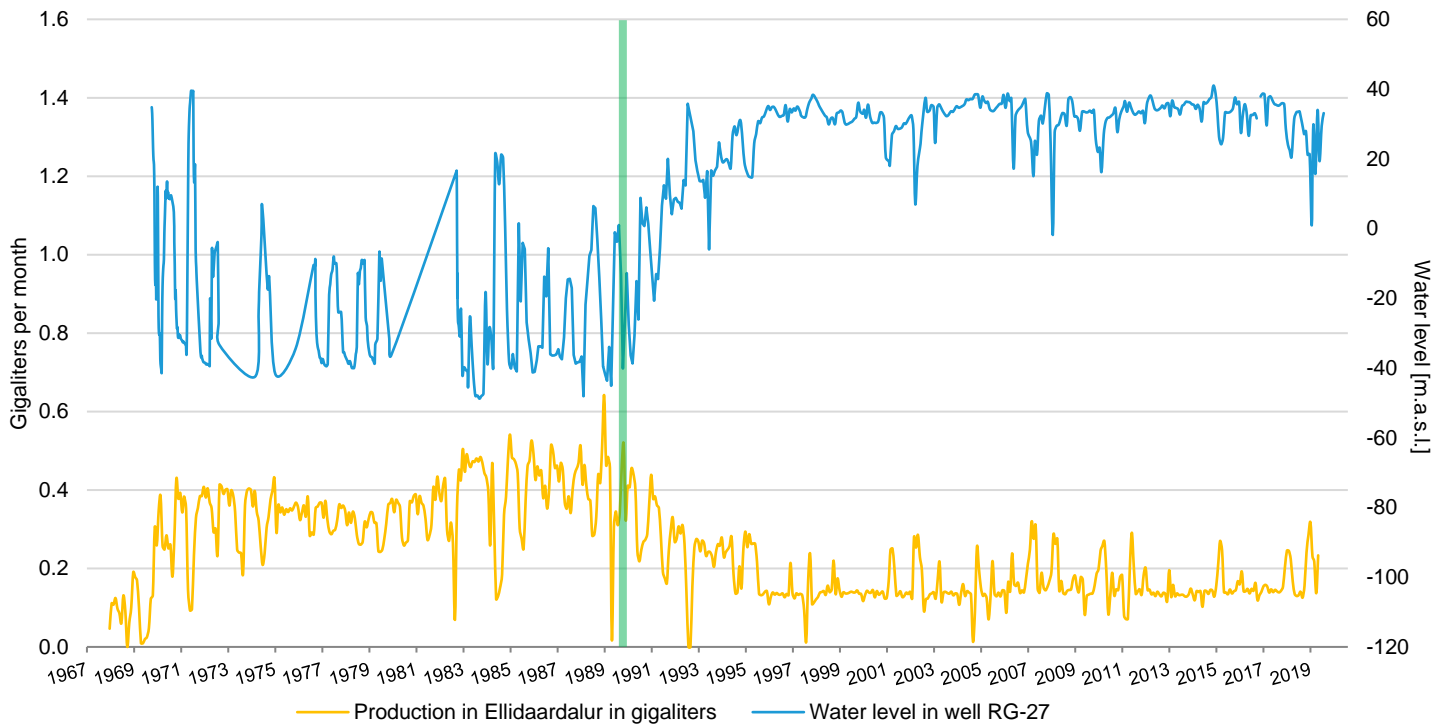
Reykjahlid



Reykir



Ellidaardalur



Laugarnes

